

*Rosewill*

**USB 2.0 + 1394a PCI Adapter RC110**  
**User Manual**



## Overview

The IEEE1394 multimedia connection (also known as Fire Wire by Apple Computer, and iLink by Sony) features hot swapping, high-speed performance, peer to peer communication and daisy chained which can accept up to 63 devices connected simultaneously.

The idea of IEEE1394 standard is all other devices and peripherals that connected outside of PC can simply plug into 1394 port instead of opening case and adding a circuit board. IEEE1394 standard is an important enabling technology for the emerging multimedia market.

## Features

- Chipset: NEC 720101
- Data Transfer Rate: USB 1.1 OHCI 1.5Mbps, 12Mbps  
USB 2.0 EHCI 480Mbps
- Bus: PCI 2.2 32-bit, 33MHz,5V
- Connector: NEC USB2.0 4+1PORT 4 external Type A USB ports and 1 internal Type A USB port
- Chipset: NEC single-chip uPD72873 (IEEE 1394 Controller)  
VIA VT6212 (USB 2.0 Controller)
- Data Transfer Rate: 1394a 100/200/400Mbps, OHCI 1.1.  
USB 1.1 OHCI 1.5Mbps, 12Mbps  
USB 2.0 EHCI 480Mbps
- Bus: PCI 2.2 32 bit, 33MHz, 3.3V.
- Connector: 2 external 1394 6-pin connectors.  
3 external Type A USB ports and 1 internal Type A USB port

### IEEE 1394 Features

- Supports up to 63 devices.
- Supports devices hot swap.
- Supports Power class 0012(1).
- Auxiliary power connector J2/J2-A to increase the power available to 1394a bus to up to 15W.
- MS Windows compatible including DV and SBP-2 drivers, supports all common

camcorders, disk drives, printers and scanners with 1394 interfaces.

- Supports Windows 98, Windows 98SE, Windows ME, Windows 2000 & Windows XP

### USB 2.0 Features

- Supports up to 127 devices
- Supports devices hot swap and wake-up
- Output current per port = 500mA (max)
- Supports Windows 98, Windows 98SE, Windows ME, Windows 2000 & Windows XP

## Troubleshooting

If your system doesn't work properly after connecting to a 1394 device, please turn off your computer. Connect the auxiliary power connector (J2/J2-A) to power supply and then restart again. If it still doesn't solve the problem, please refer to the specifications of your 1394 device. Check the power consumption and make sure it doesn't exceed 15W.

## Driver Installation

### Windows ME

Once the IEEE1394 + USB 2.0 Host Adaptor is installed and the computer is restarted, Windows will detect the board and automatic find the new hardware and install driver for it. devices in Device Manager.

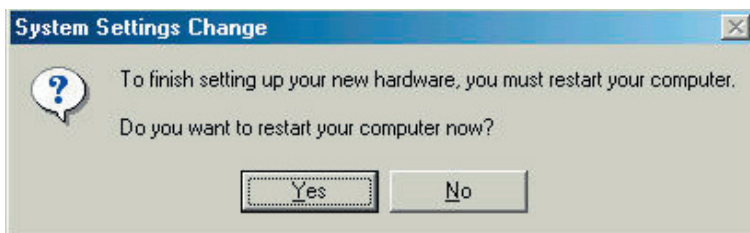
1. Windows has found new hardware "NEC Firewarden OHCI Compliant IEEE 1394 Host Controller" and click Next to continue



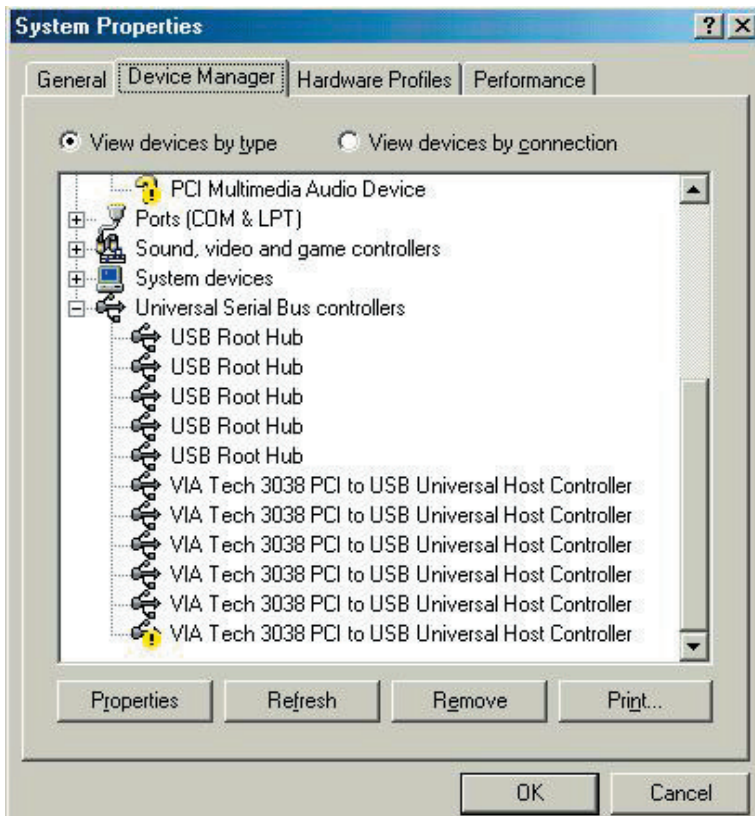
- Click “Finish” to continue.



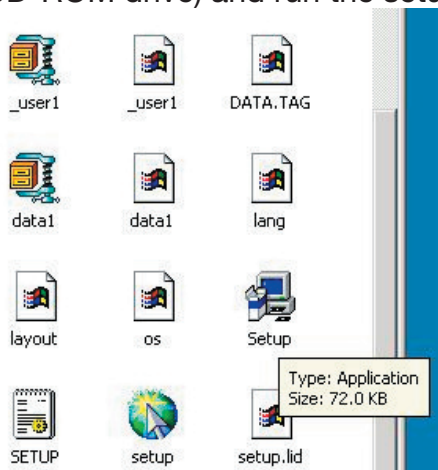
- Click “Yes” to restart computer.



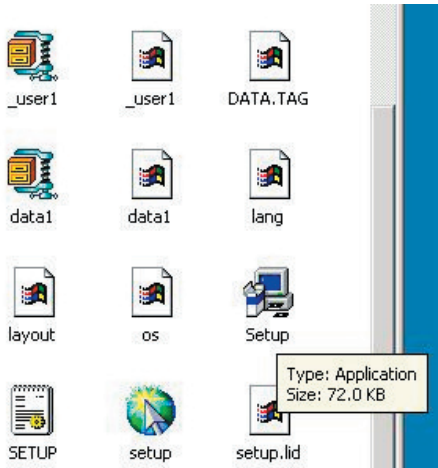
- Open the Device Manager and there is a yellow exclamation mark on one of the “VIA Tech 3038 PCI to USB Universal Host Controller” item, then install the driver from the CD-ROM.



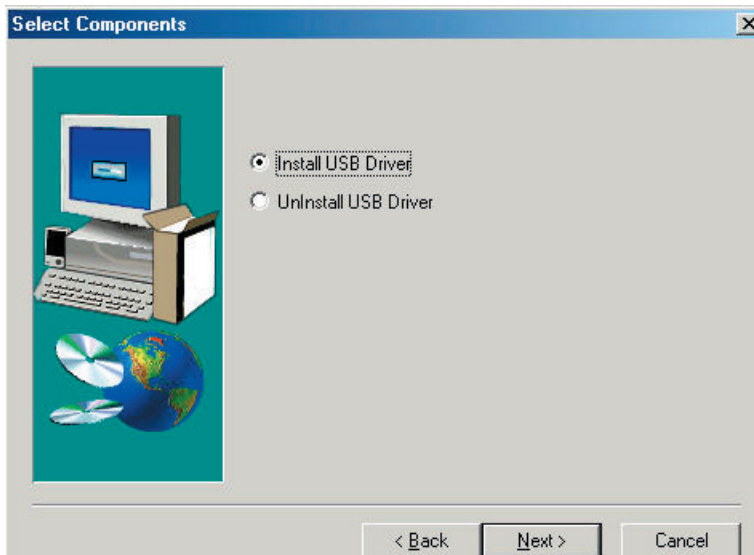
5. Insert the driver CD into the CD-ROM drive and select “F:\PCI\_IO\VIAUSB20\” (where F is CD-ROM drive) and run the setup program by double clicking on the “setup.exe” file in this CD.



6. Click Next.



7. Select “Install USB 2.0 Driver” and click Next. Select “Install USB 2.0 Driver” and click Next.



8. Click Finish to restart the computer.



**Thank you for purchasing Rosewill Product.**

Please register your product at [www.rosewill.com](http://www.rosewill.com) for complete warranty information and future support for your product.